

Tous droits strictement réservés. Reproduction ou communication a des tiers interdite sous quelque forme que ce soit sans autorisation écrite du propriétaire. Propriété de c FCI. Droits de reproduction FCI.

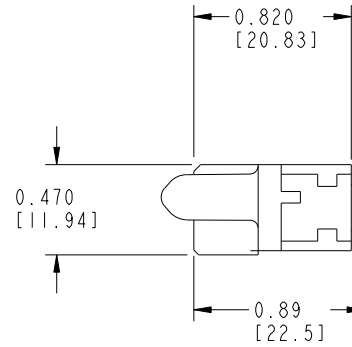
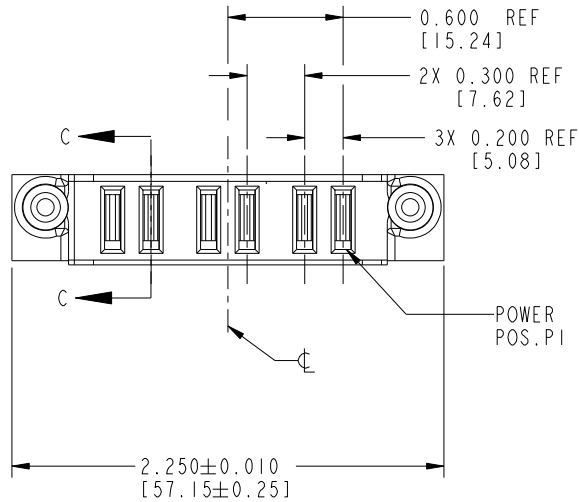
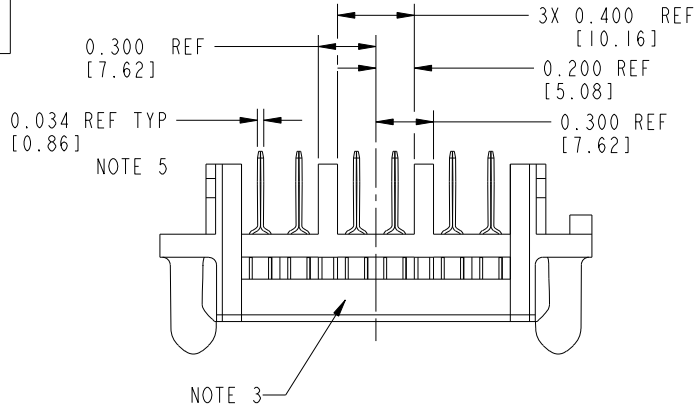


All rights strictly reserved. Reproduction or issue to third parties in any form whatever is not permitted without written authority from the proprietor. Property of FCI. Copyright FCI.

PRODUCT NUMBER

51871-005--

NOTE: ③



1 | 2

3

4

A

A

B

B

CODE	DIM "M" ±0.010 [0.25]	TERMINATION AREA ±0.010 [0.25]	CONTACT TYPE
PG	0.042 [1.07]	0.393 [9.98]	POWER
PH	0.092 [2.34]	0.393 [9.98]	POWER

mat'l code				NOTE 1		tolerances unless otherwise specified		CUSTOMER	
lir	ecn no.	dr	date	linear	.XX±.01/0.X±0.3	COPY		FCI www.fciconnect.com	
A	V03-0360	MEM	3/27/03	projection	.XXX±.005/0.XX±0.13	projection		title 6P RIGHT ANGLE CABLE RECEPTACLE	
B	DG05-0216	SJ	07/11/05	angles	.XXX±.0020/0.XXX±0.050	INCH/MM		product family PwrBlade code 213	
C	DG08-0251	W D	09/16/08	dr	0°±2°	scale 1:1		size dwg no A 51871-005 sheet 1 of 2	
				enr	M. MOSTOLLER 3/27/03				
				chr	H. BREWBAKER 3/27/03				
				appd	M. MOSTOLLER 3/27/03				
sheet index	revision sheet	C	C						
		1	2						

Pro/E

PDM: Rev: C

STAT: Released

Printed: Sep 21, 2008

1 | 2

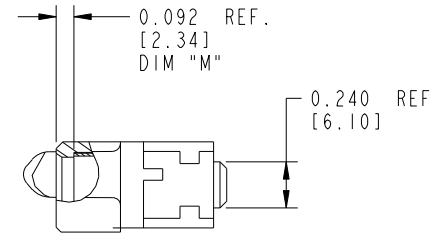
4

Tous droits strictement réservés. Reproduction ou communication a des tiers interdite sous quelque forme que ce soit sans autorisation écrite du propriétaire. Propriété de c FCI. Droits de reproduction FCI.



All rights strictly reserved. Reproduction or issue to third parties in any form whatever is not permitted without written authority from the proprietor. Property of FCI. Copyright FCI.

PRODUCT No. 51871-005-- NOTE: ③	ROWS D C B A	POWER								E I
		E2	P6	P5	P4	P3	P2	P1		
			PH	PH	PG	PG	PH	PH		



PARTIAL SECTION C-C

CONNECTOR NOTES:

- ① HOUSING MATERIAL: UL 94 V-0 GLASS FILLED HIGH TEMP THERMOPLASTIC
POWER CONTACT MATERIAL: COPPER ALLOY
- ② SEE ITEM 5 & 6 IN PRINT 10064183 FOR PLATING SPEC OF 51871-005 AND 51871-005LF RESPECTIVELY.
- ③ "MANUFACTURER'S" NAME, P/N, AND DATE CODE TO APPEAR ON THIS SURFACE
4. PRODUCT SPECIFICATION GS-12-149
5. TERMINATE WITH INDUSTRY STANDARD FEMALE .250 INCH QUICK DISCONNECT TERMINAL CAPABLE OF MATING TO A STANDARD .032 INCH THICK X .250 INCH WIDE MALE TAB TERMINAL.
6. A SYMBOL WILL BE NEXT TO ANY DIMENSION, VIEW, OR NOTE WHICH HAS BEEN MODIFIED WITH THE CURRENT DRAWING REVISION.

mat'l code		NOTE 1		tolerances unless otherwise specified		CUSTOMER		FCI		www.fciconnect.com	
ltr	ecn no.	dr	date	linear	.XX±.01/0.X±0.3	projection	COPY	title			
c				angles	.XXX±.005/0.XX±0.13			6P RIGHT ANGLE CABLE RECEPTACLE			
				dr	.XXX±.0020/0.XXX±0.050			product family		code	
				engr	0°±2°	scale		PwrBlade		213	
				chr		1:1		size	dwg no	sheet	
				appd				A	51871-005	?	
sheet index	revision sheet										

Pro/E

PDM: Rev:C

STATUS: Released

Printed: Sep 21, 2008